

# Line Voltage Thermostat

PRO

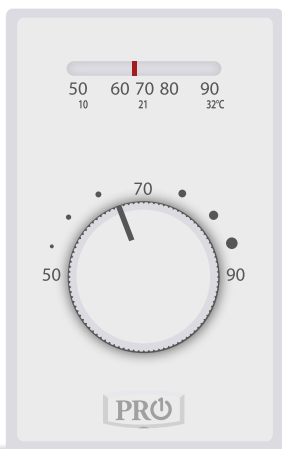


**T501ML2/4**

## *Exclusively For Contractors*

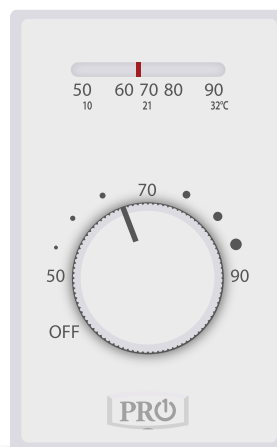
- Ambient Temperature Display
- Positive OFF Switch (4 Wire Model)
- Simple Single Dial Control
- No Batteries Necessary
- Great For Baseboard Heaters

### T501ML2



**Electrical Heat  
Thermostat**  
Heat Only  
Mercury Free  
Non-Programmable  
2 Wire

### T501ML4



**Electrical Heat  
Thermostat**  
Heat Only  
Mercury Free  
Non-Programmable  
4 Wire



PRO

1-800-PRO1-559 (776-1559)

www.pro1iaq.com



# T501ML 2/4 Thermostat Specifications

## Specifications

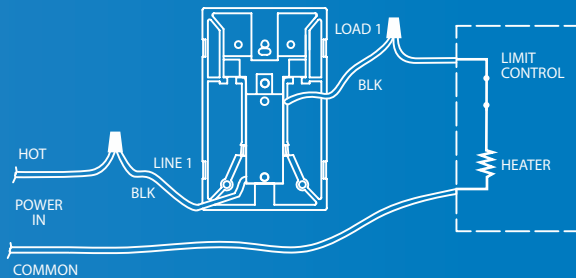
Temperature Range.....	50°F to 90°F (10°C to 32°C)
Electric Rating.....	22A/120VAC Resistive (Non-Inductive) 22A/240VAC Resistive (Non-Inductive) 19A/277VAC Resistive (Non-Inductive)
Differential.....	3°F Non-adjustable
Mount.....	Vertical
Color.....	White
T501ML2.....	SPST Switch - Single line disconnect Black - Black: Opens on temperature rise
T501ML4.....	DPST Switch - Double line disconnect Black - Black: Opens on temperature rise Red - Red: Opens in OFF position for double line disconnect
Wire.....	6 inch leads (12 AWG)
Dimensions.....	W - 2.9", L - 4.7"
Application.....	Electric heat thermostat
Warranty.....	One year

### T501ML2

#### SWITCH RATING:

22.0A (2,500W) 120VAC. (NON-INDUCTIVE) MAX.  
22.0A (5,000W) 240VAC. (NON-INDUCTIVE) MAX.  
19.0A (5,000W) 277VAC. (NON-INDUCTIVE) MAX.

BLK-BLK OPENS ON TEMPERATURE RISE.

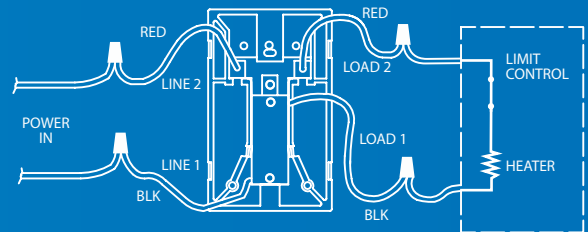


### T501ML4

#### SWITCH RATING:

22.0A (2,500W) 120VAC. (NON-INDUCTIVE) MAX.  
22.0A (5,000W) 240VAC. (NON-INDUCTIVE) MAX.  
19.0A (5,000W) 277VAC. (NON-INDUCTIVE) MAX.

RED-RED OPENS IN "OFF" POSITION.  
BLK-BLK OPENS ON TEMPERATURE RISE.



v 1802

